



2017 SCTA LEAGUE REGULATIONS (SLR)

“The Code” can be found in [Friend at Court](#) . These are standard procedures that all players will use in reaching decisions for “unofficial” matches. For complete USTA League Regulations go to: www.usta.com

TABLE OF CONTENTS

USTA & SCTA LEAGUE REGULATION CHANGES -----	2-3
1.00 GENERAL	
Local League Areas; Captains; League Registration; Refund Policy; Score Entry and Confirmation Procedure -----	4
Season Dates; Home Facility; Team; Combined League Policy; Weekend/Weekday Policy -----	5
Ineligible Players; Player Participation Eligibility -----	6
2.00 SCTA LEAGUES REGULATIONS	
<u>LOCAL COMPETITION:</u>	
NTRP Levels of Play; Competition Format; Team Match (Defaults); Confirming Match Play; -----	6-8
Line/Team Defaults; Reschedules (Penalties; Unplayable Conditions; Heat Rule); Team Line-Ups; Coaching	
<u>PROGRESSION:</u>	
District/Area Playoffs; Sectional Championships; Court Surface; Captain’s Championship Registration; Scoring; -----	9
Competition Format	
Team Defaults; NTRP Dynamic Disqualification Procedures; Year-End NTRP Computer Ratings; Move-up/Split-up ---	10
3.00 GRIEVANCE PROCEDURES (Summary)-----	11
REGULATION SUMMARY CHART -----	12
TIMED MATCH PROCEDURE -----	13
GLOSSARY; ALC INFORMATION; LEAGUE SUB-COMMITTEE -----	14

FOR REFERENCE

- *ULR = USTA League Regulations (www.usta.com)
- *SLR = SCTA League Regulations (www.scta.usta.com)
- *LLR = Local League Regulations

- *SLC = Section League Coordinator
- *ALC = Area League Coordinator
- *LLC = Local League Coordinator

2017 SLR changes are in red and underlined

2017 LLR that the Section has allowed the Local Areas to delegate authority - are in GREEN

League Calendar: (www.scta.usta.com)

SOUTHERN CALIFORNIA TENNIS ASSOCIATION (SCTA)

P.O. Box 240015, Los Angeles, CA 90024-9115 (O) 310-208-3838, (F) 310-824-7691

- | | |
|------------------------------------|------------------------|
| *Adult Section League Coordinator: | Ali Ordoñez x 223* |
| *Adult Competition Coordinator: | Mary Gastro x 235* |
| *Adult Competition Manager: | Madeline Segura x 234* |
| *Adult Competition Director: | Linda Milan x224 |

USTA LEAGUE REGULATION (ULR) CHANGES FOR 2017

1. 2.03A4 and Inside Cover: allow one (1) default to count towards eligibility for National Championships.
2. Early Start Ratings are eliminated.
 - 2.05B(3)a: Players moved up and are clearly above level must adjust to their new NTRP level immediately.
 - 2.05B(3)b: Players will always use their most recent valid year-end rating to register for any early start leagues. Players moved up at year-end are not allowed to advance to any National Championship at the lower NTRP level
 - 2.05B(3)c: There is an exception for players on a 2.5 team; they may continue through National Championships unless they are clearly above level.
3. 2.05E(2) Ratings for players 65&Over who are moved up will be published; automatic appeal will be granted upon request (through TennisLink auto- appeal function).
4. 2.07: Only National Championship players will not be allowed to appeal their rating down for one year after participating in a National Championship. All other Championship players will be allowed to appeal their ratings up or down. The appeal will be granted if they meet the appeal criteria.
5. 3.01 Grievance Procedures: Sections may honor sanctions imposed in another Section.

SCTA LEAGUE REGULATION (SLR) CHANGES FOR 2017

1.00 GENERAL

1. Team Captain, pg 4

Captains must be familiar with League Regulations and Tennislink and are responsible to hand down all information given to them to their players. Captains are also responsible for the behavior of spectators to ensure a safe and fun environment for league participation.

2. Home Facility, pg 5

If it is discovered that a team is not playing their home matches within their Area, those match results will be taken out of the standings.

3. Team, pg 5

Three or more teams (50% at level): In all "straight level" leagues (USTA Adult 18 and 40 & Over and SCTA Doubles league).

2.00 SCTA LEAGUE REGULATIONS

LOCAL COMPETITION:

4. Unplayable Conditions & the Heat Rule, pg 8

If there is not a local league regulation in place, the following will apply:

- If the day before the team match Unplayable Conditions or conditions under the Heat Rule are forecasted for the time of the match, it may be rescheduled with no penalties, if there is sufficient time within the league season to do so.
- If the day before the team match Unplayable Conditions or conditions under the Heat Rule were not forecasted but it becomes unplayable the day of or prior to the start of the match, it may be rescheduled with no penalties. Teams should not wait more than ½ hour past the originally scheduled time, to see if conditions change. *(Both captains may agree to wait longer or choose a different location within their Area to play the match).*
 - If Unplayable Conditions exist after the team match has started and it is unable to be rescheduled, enter any individual lines not completed as a Timed Match.
 - If the heat reaches 95 degrees or higher after a team match has started, the team match must be played to completion unless both captains agree to reschedule any individual lines players might be unable to finish. If both captains do not agree to reschedule the team match (which should be agreed on prior to the start of the match) or if the rescheduled team match could not be completed by the end of the local league season, the following steps will be followed:
 - A retirement will be recorded for any player(s) who were unable to complete their individual match. The win will go to their opponents.
 - A retirement will be recorded if all players were unable to complete their individual match. The win will go to the team that was ahead.
 - If it's a "Tie", the individual match will be recorded as a Timed Match. TennisLink automatically grants the win to the visiting team.
- A rescheduled date must be agreed upon within one week from the match date and played before the end of the local league season.
 - If the team match had not started, a different line-up may be used. If neither team can agree to a rescheduled date and time the (SED) Season End Date will be the last day it can be played. Otherwise, it will be entered as a Double Default.

PROGRESSION:**6. District/Area Playoffs, pg 8**

All teams advancing past local league competition will participate at a District/Area Playoff to receive one of four spots at the Sectional Championship.

Local League Winners in BAKE; SB; VENT; SFV; LA and SGV areas will advance to the North District/Area Playoffs.

Local League Winners in BC; OC; IE; CV; SD and SDNC areas will advance to the South District/Area Playoffs.

The top two teams from each District/Area Playoff will advance to Sectional Championships.

Exception: If there are 4 or less areas competing at a NTRP level, the local league winners will advance directly to Sectionals. Since these Playoffs are considered separate events, players may participate in both if they are eligible to do so.

7. Sectional Championships, pg 8

If the winning team at any NTRP level of competition is unable to compete further towards the National Championships, then the second place team will be asked to take their spot.

8. Competition Format, pg 9

District/Area Playoffs: Teams will be placed in flights and a round robin format will be used. The Area with the most number of teams will be entered in the first flight. The Area with the second most number of teams will be entered in the second flight, etc. This sequence will continue until all flights have been filled. Wildcards will be placed where needed and the wildcard rotation will be used.(See Glossary)

Sectional Championships: The top two teams of the North and South District/Area Playoffs will be drawn to fill the four spots available in the flight. If a wildcard is needed, the second place team from District/Area Playoffs or local league, whichever applies will be asked to fill the spot.

9. NTRP Dynamic Disqualification Procedures, pg10 (For complete details, see (ULR) at www.usta.com)

SCTA will run dynamic ratings during USTA league seasons: Adult 18, 40, and 55 and Over. Self-rated players or players with appealed ratings are subject to dynamic disqualification.

Local level: Players who meet the criteria for NTRP Dynamic Disqualification will be immediately promoted to a higher NTRP level. Matches played will stand.

Championship level: SCTA will run dynamic calculations following the conclusion of the championship and disqualify those players who meet the criteria for NTRP Dynamic Disqualification. Matches played will stand. (See Nat Reg 2.04E(2) for championship scoring procedures when NTRP Dynamic Disqualifications are done following the conclusion of championship competition.)

10. YEAR-END NTRP COMPUTER RATINGS, pg 10

National Regulations in this section are applicable to all SCTA Leagues (Except the Open Level in the SCTA Doubles League).

For championships starting after Year-End Ratings are generated, contact the SCTA Adult Department.

11. GLOSSARY, pg 13**Wildcard Procedure:**

Exception: If the next Area in line for a wildcard ends up in the same flight as the LLW, that Area will be bypassed and the next Area will be asked to fill it.

1.00 GENERAL.

(See USTA League Regulations (ULR) for complete details: www.usta.com)

If a Local League does not have a regulation in place to address an issue the following Southern California Tennis Association (SCTA) League Regulations will be followed.

SCTA has approved the adoption of rules and regulations for SCTA Leagues that shall be known as the (SLR) SCTA League Regulations. The SCTA League Regulations may be amended by the SCTA. All proposed amendments shall be in writing and shall be forwarded to the SLC no later than June 1st. Without the approval of the SCTA, no amendments to these regulations shall become effective prior to January 1st of the next USTA/SCTA League Year. SCTA League Regulations (SLR) shall be governed by the Southern California Tennis Association (SCTA). SCTA is responsible for the development and implementation of the SCTA Leagues. Certain words and phrases are defined in a glossary included herein.

Local League Areas: SCTA has (12) active Local League Areas participating in USTA/SCTA Leagues: Bakersfield, Beach Cities, Coachella Vly, Inland Empire, Los Angeles, Orange County; San Diego & San Diego North Cnty, San Fernando Vly, San Gabriel Vly, Santa Barbara and Ventura. Area League Coordinators (ALC) are appointed to manage the league program in their particular Area.

Weekend/Weekday Policy: A local area offering Weekday NTRP levels that consists of six or more teams in the USTA Adult 18&Over and 40&Over age groups, will be considered a qualified separate local league.

Exception: San Diego & San Diego NC Areas.

Captains: Must be familiar with League Regulations and Tennislink and are responsible to hand down all information given to them to their players. Captains are also responsible for the behavior of spectators to ensure a safe and fun environment for league participation. Captains are the heart and soul of the league program. As a “Thank You” for all the time spent captaining a team, a “captains gift” is given out at captains meetings and the section fee of \$22 is “waived” (Contact the ALC).

League Registration:

1. Players must have a current USTA#, Team ID# and credit card information. The Section League Registration fee is \$22.00 plus a \$3.00 non-refundable Tennislink user fee per player per team.
2. Go to Tennislink.usta.com/leagues and choose “Register for a team”. Follow the steps.
3. In order for a team to be included in the local league schedule, the minimum # of players required to field a full team must register by the season’s Initial Roster Deadline (IRD) **set by the ALC.**
4. In order for players to be included in the team, they must register within the Registration Deadline (RD), which is no later than four weeks following the team’s first scheduled match.

The ALC may have a stricter registration deadline and may limit the # of players who appear on a team roster

- a. Registration deadlines shall be extended if a registration error was caused by a documented computer glitch in Tennislink.
- b. Registration deadlines may be extended if a player is dynamically promoted and is interested in registering for a team at a higher NTRP level.

Refund Policy: Players are eligible for a refund if no matches have been played and no defaults have been received. Only the Section League Registration fee of \$22.00 is refundable. Refunds will be available under the following circumstances:

1. When a team is not included in the League due to insufficient registrations and the Coordinator is unable to move the players to a different team. **The Coordinator must request the refund from the Section Office.**
2. When a player is injured or becomes ill and will be unable to play for the season. *The player must request the refund by filling out the Refund Request Form that is on the scta website.* The request must be made no later than one week following the team’s first scheduled match and must be accompanied by documentation from the physician.

Score entry and confirmation procedure:

The initial entry of match scores into Tennislink must take place within 48 hours of the completion of the match. Confirmation by the opposing team must take place within 48 hours of the initial entry or the initial score will automatically be considered valid.

1. Go to tennislink.usta.com/leagues choose “Record a Score”.
2. Enter the match # and complete the scorecard.
 - a. Retirements: Choose “Retired”, designate a winner and enter the score exactly as it finished at the point of retirement.
 - b. Timed Matches: Choose “Timed Match”, designate a winner and enter the score exactly as it finished. (See Timed Match Procedure chart).
3. Choose “Finish” if you are satisfied with the entry -OR- choose “Re-enter”.
4. If confirming the score, choose “Confirm” – OR – choose “Dispute” and exit. Report all “disputes” to the ALC for corrections and/or investigation.

Season Dates:

See the Yearly League Calendar for season date range at scta.usta.com (go to Adult – Leagues – Championship Dates). Contact the ALC for specific season dates for the area. Local League Playoffs must be completed within the local league season.

Home Facility: Teams must secure home courts in the Area they are representing. The location of the home facility will determine the league area for a team. A “shared facility” may be used as a home facility. (See *Glossary*)

If it is discovered that a team is not playing their home matches within their Area, those match results will be taken out of the standings.

Team:

- **Three or more teams (50% at level):** In all “straight level” leagues (USTA Adult 18 and 40 & Over and SCTA Doubles league), that consist of (3) or more teams, the roster must be maintained with at least 50% of its players at the designated NTRP level of play (Exception: See URL 2.06A-Move-up/Split-up). The Plus+ players in the Adult Division are considered as part of that NTRP level.

Local Areas may implement a higher % minimum

- **Two teams (40% at level):** Must maintain its roster with at least 40% of its players at the designated NTRP level of play in the following divisions and age groups: USTA Adult 18&Over and 40&Over and SCTA Doubles 18&Over.

SCTA LEAGUES

TEAM COMPOSITION & FORMAT					
DIVISION	Age Group	MINIMUM # OF PLAYERS	GENDER	FORMAT	NTRP LEVEL
Adult	65 & Over	6	Same	3 Doubles	Combined: 6.0, 7.0, 8.0, 9.0 The minimum NTRP level for: 6.0 is 2.5; 7.0 is 3.0; 8.0 is 3.5; 9.0 is 4.0
Trilevel	18 & Over	6 (One player of a doubles team must be at level)	Same	3 Doubles	4.5/4.0/3.5 4.0/3.5/3.0 3.5/3.0/2.5
SCTA Doubles	18 & Over	6	Same	3 Doubles	2.5, 3.0, 3.5, 4.0, 4.5, Open

Areas may offer additional leagues for local league play only

Q: Can two 3.5's play together on an 8.0 team? YES, there are no regulations that restrict this. As long as the minimum NTRP level is 3.5

Combined League Policy:

Areas combining and competing in league play together are considered a “Combined League” and the following policy applies:

- An Area with two teams may “combine” with a hosting Area that has two or more teams.
- Teams must secure home courts in the Area they are representing. The location of the home facility will determine the league area for a team. A “shared facility” may be used as a home facility. (See *Glossary*)
- The team with the best record from each of the Areas will advance to the next level of competition, regardless of who wins the league. For example: If Area-1 combines with hosting Area-2, the best team from both Areas will advance and represent their home Area.

Weekend/Weekday Policy: If a local area offers a qualified Weekday local league along with a Weekend local league at a specific NTRP level(s) in the Adult 18 & Over and Adult 40 & Over League Types, the winner of each league will be eligible to advance to the next level of competition. All other Weekday winners (that have fewer than six teams) are not considered separate leagues and may participate in a Local League Playoff against the winner(s) of the Weekend Flight(s) to determine which team advances to the next level of competition.

Exception: Does not apply to the San Diego & San Diego NC Areas. The women's divisions play only on Weekdays and the men's divisions play only on weekends.

Ineligible players: In all matches in which ineligible players participate, the ineligible player may be penalized by defaulting all individual matches played and/or the captain may be suspended from all league play for up to a year.

Examples of ineligible players are listed below but may not constitute a full list:

- Players who do not appear on the official team roster. (Notify ALC of any registration problems prior to the match).
- Players who have been registered by the captain without their knowledge and/or have fictitious match results entered in Tennislink.
- Players who play under another player's name.
- Players who utilize multiple USTA Membership numbers in an attempt to bypass their computer generated NTRP rating in order to enter into the league program at a different level.

College players must consult the Intercollegiate Athletics Compliance Officer/Athletic Director at their college to insure that their eligibility will not be jeopardized by competing in league tennis.

Player Participation Eligibility:

- A player can play on more than one team in an NTRP level within an Age Group in the same season as long as it is in separate local leagues, which includes qualified Weekday leagues in USTA Adult 18&Over and 40&Over age groups.
- A player can play in no more than two NTRP levels within an Age Group in the same local league during the same season.
- A player who qualifies to advance to Playoffs or Sectionals on more than one team at the same NTRP level will be required to choose and declare which team he or she will represent. In the absence of a declaration, the first match played will determine which team he or she will represent.

Players who are in violation will be disqualified from the last team on which they registered on as well as any matches played. If no matches were played and no defaults were received, the player can choose which team to be deleted from.

Exception: In the Trilevel league, a player can play at the same NTRP level at two different team levels. Ex: A 3.5 player can play on a 4.0-3.0 team and on a 4.5-3.5 team.

Local Areas have the authority to accept or deny participation

2.00 SCTA LEAGUES REGULATIONS. (For complete USTA League Regulations (ULR), go to: www.usta.com)

LOCAL COMPETITION

NTRP Levels of Play:

- The plus players can play in the #1 singles line and/or in the #1 doubles line.
- The Combined levels of play will be used at District/Area Playoffs and Sectionals for the USTA Adult 55 & Over, MxD 18 & Over and the SCTA Adult 65 & Over age groups.
- In the Trilevel league, the highest NTRP level offered will play in the #1 doubles line, second highest in the #2 doubles line and lowest level in the #3 doubles line. One player of a doubles team must be at level.

Competition Format:

- Local League Playoffs (LLP) requires a two match minimum (a default received counts as a match played) for eligibility.
- Local leagues may add additional matches, selected randomly, within a flight.

Team Match:

- Restroom facilities must be available for players at their home site in order to participate in USTA/SCTA Leagues.
- All league matches must be played on hard courts unless both teams agree to play on a different surface prior to the match.
- Recommended order of play for the Adult Division 18 and 40 & Over Age Groups: Singles and then Doubles.
- Team matches must be played on the scheduled dates unless it has been pre-approved otherwise by the ALC or rescheduled. The ALC must be informed of any change in the schedule.

Confirming Match Play: The following must be confirmed 3-4 days prior to the match by both captains:

- Day and time of the team match. Generally two (2) hours is allotted for each match, unless there are time restraints and the "Timed" match procedure may be used (see chart).
- Any line defaults, if known in advance.
- Number of courts to be used for play and, if available, for warm-up. If there are not enough courts available at one time for a team match, team captains must agree in the order of play and starting times for each individual match for that day, unless it has been pre-determined by the ALC.
- Directions to the tennis facility.

Line Defaults: The least amount of lines should be defaulted and all players available should be utilized. If no prior notice is given, the team that has the most players present and available to play will receive the defaulted lines and may change their line-up according to the following 5-line format Default Procedure:

- 7 players: Default #2 Singles
- 6 players: Default #3 Doubles
- 5 players: Default #2 Singles & # 3 Doubles
- 4 players: Default #2 and #3 Doubles

5-line format example-1: Team A shows up with only 4 players. Team B has more than 4 players present. Solution: The match is played. Team B receives defaults on the #2 and #3 doubles lines.

5-line format example-2: Team A shows up with only 5 players. Team B has more than 5 players present. Solution: Play the match. Team B receives defaults on the #2 singles line and #3 doubles line.

3-line format example-1: Team A shows up with only 4 players. Team B has more than 4 players present. Solution: Play the match. Team B receives a default on the #3 doubles line.

3-line format example-2: Team A shows up with only one player from the #1 doubles line and the #3 doubles line. Solution: They would play together at the #1 doubles line. The #2 doubles line would remain the same and the default would occur at the #3 doubles line.

3-line format in Trilevel example-1: Team A shows up only having enough players at level to play the #1 and #2 doubles lines. Team B shows up only having enough players at level to play the #2 and #3 doubles lines.

Solution: The team match must be re-scheduled, if there is sufficient time within the league season to do so. Otherwise, it will be recorded as a "double default".

3-line format in Trilevel example-2: Team A shows up only having enough players at level to play the #1 and #3 doubles lines. Solution: Play the #1 and #3 doubles line and default the #2 doubles line. Any one of the 3 Doubles lines may be defaulted in the Trilevel league.

If a Team refuses to play, they are defaulted.

Any team that shows up with fewer than 4 players (3 for a 1 singles and 2 doubles format) will be defaulted unless the other team agrees to reschedule the team match, if there is sufficient time within the league season to do so. The Reschedule Penalty procedure will apply.

Team Defaults: The standings will be adjusted to reflect only actual matches played by the other teams which prevents a team from advancing due to a whole team default. In a multiple round robin format each round robin is considered a separate segment. If the team default took place in the 2nd round robin segment, for example, only those matches will be affected.

The local league may impose further penalties on the defaulting team

Reschedules: Rescheduled matches will fall under the "No Penalty Policy" or under the "Penalty Policy".

- **Reschedule with No Penalty:** 1) If a minimum of 4 players on the team is representing that Area at a USTA/SCTA league Playoff or Championship; 2) If the Home Facility scheduled an unplanned event and there are no courts available on or off site; 3) Due to Unplayable Conditions; 4) Due to the Heat Rule.
- **Reschedule with Penalty:** The team asking for a re-schedule will default 2 lines (for formats using 5-lines) or 1 line (for formats using 3 lines), whichever applies. The Team agreeing to reschedule shall decide which lines will be forfeited from the following options: a) #1 & #2 Singles; b) #2 Singles & # 3 Doubles; or c) #2 & #3 Doubles.
- **Unplayable Conditions & the Heat Rule:** See www.accuweather.com

Local Areas may choose to use one particular site, see Local League Regulations (LLR)

- **Unplayable Conditions:** Conditions that make it impossible to continue playing, which may include, but is not limited to: Rain, Fire, Ash and if a State of Emergency prevents teams from getting to their locations in a timely manner.
- **Heat Rule:** Air Temperature of 95 degrees & higher.

If there is not a local league regulation in place, the following will apply:

- If the day before the **team** match Unplayable Conditions or conditions under the Heat Rule are forecasted for the time of the match, it may be rescheduled with no penalties, if there is sufficient time within the league season to do so.
- If the day before the **team** match Unplayable Conditions or conditions under the Heat Rule were not forecasted but it becomes unplayable the day of or prior to the start of the match, it may be rescheduled with no penalties. Teams should not wait more than ½ hour past the originally scheduled time, to see if conditions change. *(Both captains may agree to wait longer or choose a different location within their Area to play the match).*
 - If Unplayable Conditions exist after the **team** match has started and it is unable to be rescheduled, enter **any individual lines not completed** as a Timed Match.
 - If the heat reaches 95 degrees or higher after a **team** match has started, the team match must be played to completion unless both captains agree to reschedule any individual lines players might be unable to finish.

If both captains do not agree to reschedule the team match (which should be agreed on prior to the start of the match) or if the rescheduled team match could not be completed by the end of the local league season, the following steps will be followed:

- A retirement will be recorded for any player(s) who were unable to complete their individual match. The win will go to their opponents.
- A retirement will be recorded if all players were unable to complete their individual match. The win will go to the team that was ahead.
 - If it's a "Tie", the individual match will be recorded as a Timed Match. TennisLink automatically grants the win to the visiting team.

ALC's may confirm "Unplayable Conditions and the Heat Rule" if there are any questions or disputes

- A rescheduled date must be agreed upon within one week from the match date and played before the end of the local league season.
 - If the team match had not started, a different line-up may be used. If neither team can agree to a rescheduled date and time the (SED) Season End Date will be the last day it can be played. Otherwise, it will be entered as a Double Default.
 - If the match started, completed individual matches will stand as played and incomplete matches will need to resume with the same players and at the exact score (set, game, point) as they stood when halted. Any point played is always counted and never replayed.

The ALC may impose further sanctions or penalties

When a league season cannot be completed, the local league champion will be determined by the ALC in consultation with the SLC. Factors to be considered may include, but are not limited to: Length of schedule; Number of matches completed; Head to Head results of teams in contention; Highest percentage of wins.

Local Areas have the option to use either 2 out of 3 sets or a Match Tiebreak in lieu of a third set.

SCTA will implement ULR 2.03H procedures in the event of a Tie at the local level. (See ULR for complete details at www.usta.com)

Team Line-Ups:

Team Captains may: a) Ask for photo IDs. If not available, the player(s) may be replaced. If an eligible substitute is not available, that line(s) may be defaulted and b) Adjust their line-up if a team defaults a line(s) with no prior notification.

The local league may impose further penalties on the defaulting team.

Coaching:

No coaching allowed when a match tiebreak is used in lieu of a 3rd set.

PROGRESSION (See League Calendar on the www.scta.usta.com website – under Adult – League – Championship Dates)

District/Area Playoffs:

All teams advancing past local league competition will participate at a District/ Area Playoff to receive one of four spots at the Sectional Championship.

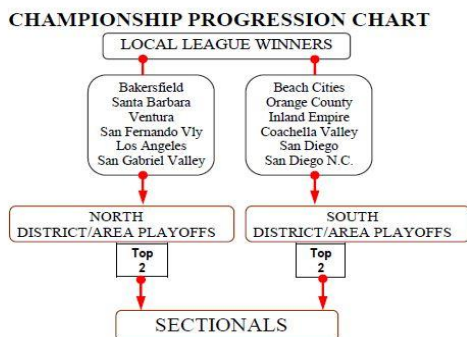
*Local League Winners in BAKE; SB; VENT; SFV; LA and SGV areas will advance to the North District/Area Playoffs.

*Local League Winners in BC; OC; IE; CV; SD and SDNC areas will advance to the South District/Area Playoffs.

The top two teams from the North District/Area Playoffs and the South District/Area Playoffs will advance to Sectional Championships.

Exception: If there are only 4 areas competing at a NTRP level, the local league winners will advance directly to Sectionals.

Since these Playoffs are considered separate events, players may participate in both if they are eligible to do so.



Sectional Championships:

If the winning team at any NTRP level of competition is unable to compete further towards the National Championships, then the second place team will be asked to take their spot.

The Championship Director shall appoint the Championship Committees for District/Area Playoffs and Sectional Championships.

Court Surface: Hard Court.

Championship Awards will be given to the winners.

Finalist Awards will be given to the 2nd place team for flights that have 4 or more teams.

*Maximum of 16/per team for 5-line formats.

*Maximum of 12/per team for 3-line formats.

SCTA Trilevel Sectional Champions of the 4.5-3.5 level will be offered the opportunity to participate at the BNP Paribas Trilevel Invitational in March of the following year, if it is offered. There are no match minimum requirements.

SCTA Adult 65 & Over Sectional Champions will be offered the opportunity to participate at the Adult 65 & Over Invitational in April/May of the following year, if it is offered. There is a two match minimum requirement to advance (1 match may be a default received)

The minimum number of team members required for the SCTA Doubles, SCTA Adult 65 & Over and SCTA Trilevel Championships is 6 (For Trilevel, there must be at least 1 player at level on each line).

Captain's Championship Registration form: Captains must submit the on-line form to the SCTA office as soon as their team is announced the local league winner or wildcard recipient, in order to ensure their spot at the championship. Teams may not be accepted into the championship if the registration form is received later than two weeks prior to the event.

Scoring: The best of three tiebreak sets with a match tiebreak in lieu of a third set will be used for all District/Area Playoffs and Sectionals.

Competition Format:

District/Area Playoffs: Teams will be placed in flights and a round robin format will be used. The Area with the most number of teams will be entered in the first flight. The Area with the second most number of teams will be entered in the second flight, etc. This sequence will continue until all flights have been filled. Wildcards will be placed where needed and the wildcard rotation will be used.(See Glossary)

Sectional Championships: The top two teams of the North and South District/Area Playoffs will be drawn to fill the four spots available in the flight. If a wildcard is needed, the second place team from District/Area Playoffs or local league, whichever applies will be asked to fill the spot.

Team Defaults:

In all SCTA championships after local league competition, a team must have a minimum of four eligible players available for play in each team match or the entire match must be defaulted. A maximum of one position may be defaulted without defaulting the entire match. See table below:

ALLOWABLE DEFAULTS				
DIVISION	LEAGUE TYPE	MINIMUM NUMBER OF ELIGIBLE PLAYERS REQUIRED TO BE AVAILABLE PER MATCH	MAXIMUM NUMBER OF POSITIONS THAT CAN BE DEFAULTED	REQUIRED POSITION(S) AND ORDER OF MATCH DEFAULTS
Adult	65 & Over	4 players who are eligible to combine and compete	1	No. 3 Doubles
Trilevel	18 & Over	4 players (1 player must be AT LEVEL)	1	Either one of the 3 lines
SCTA Doubles	18 & Over	4 Players	1	No. 3 Doubles

A team cannot advance due to a Team Default, therefore, the default and any matches played by the defaulting team will be taken out of the standings in the round robin segment in which the default took place.

An entire team defaulting in a championship may be ineligible to participate in that division for the following league year. This penalty may apply to every player who played at least one match for the forfeiting team. Special Circumstances will be evaluated on a case by case basis.

NTRP Dynamic Disqualification Procedures. (For complete details, see (ULR) USTA League Regulations at www.usta.com)

SCTA will run dynamic ratings during USTA league seasons: Adult 18, 40, and 55 and Over. Self-rated players or players with appealed ratings are subject to dynamic disqualification.

Local level: Players who meet the criteria for NTRP Dynamic Disqualification will be immediately promoted to a higher NTRP level. Matches played will stand.

Championship level: SCTA will run dynamic calculations following the conclusion of the championship and disqualify those players who meet the criteria for NTRP Dynamic Disqualification. Matches played will stand. (See Nat Reg 2.04E(2) for championship scoring procedures when NTRP Dynamic Disqualifications are done following the conclusion of championship competition.)

YEAR-END NTRP COMPUTER RATINGS. (For complete details, see (ULR) USTA League Regulations at www.usta.com)

USTA League Regulations in this section are applicable to all SCTA Leagues (Except the Open Level in the SCTA Doubles League).

Ratings are directly affected by: a) Your partner; b) Your opponent's dynamic rating; c) Your current dynamic rating; d) The closeness of the match (regardless of whether it was a win or a loss).

Ratings are not directly affected by: a) What position you play; b) Your wins and losses; c) Team standings; d) Age

For championships starting after Year-End Ratings are generated, contact the SCTA Adult Department.

The NTRP Coordinator will be responsible for all NTRP issues and the management of the Automated Appeal Process. The Automated Appeal instructions are located at: www.scta.usta.com – Adult – Leagues – NTRP ratings.

Year-End Rating Appeal Period: Appeals submitted after registration will be reviewed for future play, not for the season they are currently playing in.

Medical Appeal Period: All year. Medical Appeals require an Appeal Form which may be downloaded from the scta website. The Appeal must include Pertinent information & documentation that determines the degree to which the injury or debilitating condition is temporary or permanent.

MOVE-UP/SPLIT-UP

SCTA will suspend the "50% at level" rule for one year for any team and team members that advanced to, or qualified for, any National Championship the previous year and choose to move up one NTRP team level as a team, in whole or in part. Example: If two 4.0 players from the previous years Adult 18&Over National team want to play together on a 4.5 Adult 40 & Over team along with Non-National 4.0 players, the team is not subject to the "50% at level" rule.

The following procedure will be followed as soon as it is discovered that a team is not in compliance: Players with the latest registration dates that are out of compliance, will be disqualified from the team and matches played shall be considered 6-0, 6-0 losses and wins for the opposing player or doubles team.

The Move-up/Split-up regulation applies to all USTA Sectional Winners and any other team(s) that qualify to advance to a National Championship. It does not apply to the Section Leagues: SCTA Doubles, Trilevel and Adult 65&Over.

SCTA will not restrict crossover between Adult and Mixed Divisions.

3.00 GRIEVANCE PROCEDURES.

All Local League Grievance Committees and Local League Grievance Appeal Committees shall be approved by the Section Office.

Summary: For complete details see the USTA League Regulations (ULR): www.usta.com

Step 1:

a) Local League Grievances are submitted to the ALC prior to the commencement of whichever occurs first: (a) the involved team's next match in that flight, whether or not the involved player participates or (b) within 24 hours after the end of the local league season. It will be reviewed by the Local League Grievance Committee..

b) Championship Grievances are delivered to the duly appointed site director or designee prior to whichever occurs first: (a) within 30 minutes of the completion of the involved team's match or (b) the commencement of the involved team's next match, whether or not the involved player participates. It will be reviewed by the Championship Committee.

b) NTRP Grievances are submitted to the SCTA office to the attention of the NTRP Grievance Committee anytime up to 48 hours after the conclusion of the Sectional Championship of the player's team, whether or not the player participated. It will be administered by the Sectional League NTRP Grievance Committee.

c) Administrative Grievances are submitted to the SCTA office to the attention of the SLC within one year of the incident.

Step 2: Grievances and any documentation will be submitted to the appropriate committee and forwarded to all parties involved. A specified time will be given to submit any documentation and response.

Step 3: Decisions will be sent to all parties involved. A specified time will be given for Appeal submissions.

Step 4: Appeal submissions will be reviewed by the appropriate Grievance Appeal Committee.

Step 5: Decisions made by the Grievance Appeal Committee will be FINAL.

Exception: *Suspensions of 12 months or more will be reviewed by the National League Grievance Appeal Committee.*

2017 USTA/SCTA REGULATION SUMMARY CHART

USTA LEAGUES

SCTA LEAGUES

REGULATION	ADULT			MXD		TRILEVEL	SCTA Dbles	Adult
AGE GROUPS:	18 & Over	40 & Over	55 & Over	18 & Over	40 & Over	18 & Over	18 & Over	65 & Over
GENDER:	Men & Women (Separate Teams)	Men & Women (Separate Teams)	Men & Women (Separate Teams)	Men & Women (Same Team)	Men & Women (Same Team)	Men & Women (Separate Teams)	Men & Women (Separate Teams)	Men & Women (Separate Teams)
NTRP RATING LEVELS: Straight Levels: Can play one level above current level, but not over team level. Combined Levels: NTRP rating levels of partners shall not exceed team level. The NTRP difference between them shall not exceed 1.0	2.5F,3.0,3.5, 4.0,4.5,5.0+ (5.0+ level may have up to two 5.5 players on team, but can only play 1 in a match)	3.0,3.5,4.0,4.5+ (4.5+ level may have up to three 5.0 players on team, but can only play 2 in a match)				3.5/3.0/2.5 4.0/3.5/3.0 4.5/4.0/3.5 (One player of a Dbles team must be at level)	2.5,3.0,3.5, 4.0,4.5,Op	
LEAGUE FORMAT: (Local Areas may have a different format)	2 Sgls/3 Dbles (3.0,3.5,4.0,4.5) & 1 Sgls&2 Dbles (2.5F & 5.0+)	2 Sgls/3 Dbles (3.0,3.5,4.0,4.5+)	3 Dbles	3 Dbles	3 Dbles	3 Dbles	3 Dbles	3 Dbles
Min. # of players required to register by the Initial Roster Deadline (IRD)	8 (5-line format) & 5 (3-line format)	8 (5-line format) & 5 (3-line format)	6	6 (3M & 3W)	6 (3M & 3W)	6 (At least 1 per level +3)	6	6
Min % required @ Level for 3 or more teams: Min % required @ Level for 2 teams only:	50% 40%	50% 40%	N/A	N/A	N/A	N/A	50% 40%	N/A
Max # of Positions that can be defaulted: (#2 Sgls before #1 Sgls) (#3 Dbles before #2 Dbles) (#2 Dbles before #1 Dbles)	2 (3.0,3.5,4.0,4.5) & 1 (2.5F & 5.0+)	2 (3.0,3.5,4.0,4.5+) OR 1 (3-line format)	1	1	1	1	1	1
DYN RATINGS:	YES	YES	YES	NO	NO	NO	NO	NO
INCLUDED IN YE RATINGS: (Includes results recorded Nov - Dec of previous yr)	YES	YES	YES	(MxD exclusive ratings only)	(MxD exclusive ratings only)	YES	YES (Except for the Open level)	YES
NATIONALS:	YES	YES	YES	YES	YES	NO YES (4.5/4.0/3.5)	NO	YES
INVITATIONALS:							NO	YES
MIN# of Matches Required: Below Nationals: (1 default rec'd counts)	2	2	2	2	2	2	2	2
At Nationals/Invit'l: (1 default rec'd counts)	3	3	3	3	3	N/A	N/A	1
MOVE-UP/SPLIT-UP Max of (3) players can play together the following yr Max of (2) for (2.5F & 5.0+). (Applies to those that played in 3 or more matches, excluding defaults, for that team during the Champ Yr.	YES	YES	YES	YES	YES	NO	NO	NO

For Invitationals starting after Year-End ratings are generated, call SCTA for more info.

Timed Match Procedure when Third Set is a Match Tiebreaker

Split Sets

3rd Set Match Tiebreak started:

- 1) If the score is Equal, play a One Point Tie-Break to determine the Match Winner.
- 2) If the score is not Equal, the team ahead by at least one point is the Match Winner.

Example: Team A wins first set 7-6. Team B wins second set 6-7. Whoever wins the Match Tie-Break is the Match Winner.

3rd Set Match Tiebreak not started: Count the Total # of games won:

- 1) The team with the Highest # of Games Won is the Match Winner.
- 2) If it's a Tie (for example: 7-6, 6-7), play a One Point Tie-Break to determine the Match Winner.

Any local league match that will go beyond the allotted time with no additional time to finish, must use the Timed Match Procedure. (See SLR - "Confirming Match Play").

At 5 minutes before the allotted time runs out, no new game will begin. All games "in play" are completed.

A game is "in play" once the server has struck the first ball.

Enter the score exactly as it finished, choose "Timed Match" and designate a Winning Team (See Examples below)

***A One Point TB score is not entered *A Match TB score is entered as 1-0 *All Set TB scores are entered as 7-6 or 6-7**

2nd Set Incomplete

2nd Set Tiebreak started:

- 1) The team that is ahead by at least one point is the Set Winner.
- 2) If the score is equal, play a One Point Tie-Break to win the set.

2nd Set Tiebreak not started:

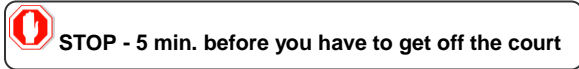
- 1) The team that is ahead 4-0, 4-1, 5-0, 5-1 is the 2nd Set winner.
- 2) If the total # of games played in the Set is six or more and one team is ahead by two games, they are the 2nd Set Winner.
- 3) If the total # of games played in the Set is not six or more, it is an invalid 2nd Set and the team that won the First Set Wins the Match.

Example: Team A wins first set 7-6 and Team B wins second set 2-4. They Split Sets. Team B is the Winner with 10 total games won.

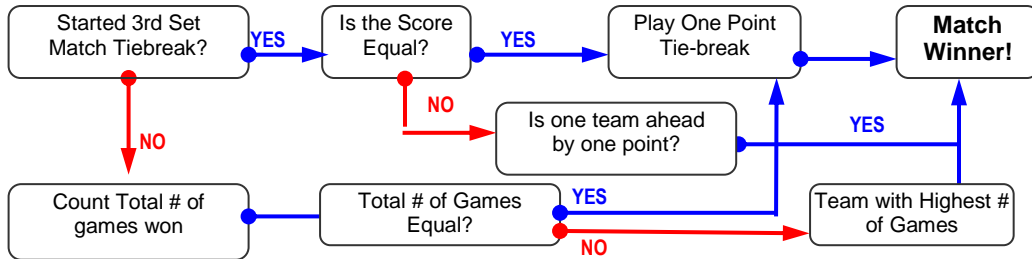
Example: Team A wins first set 7-6 and wins second set 4-2. Team A is the Winner, they are ahead by at least 2 games..

Example: Team A wins first set 7-6 and the second set is 3-3. Team A is the Winner, the 2nd set is invalid.

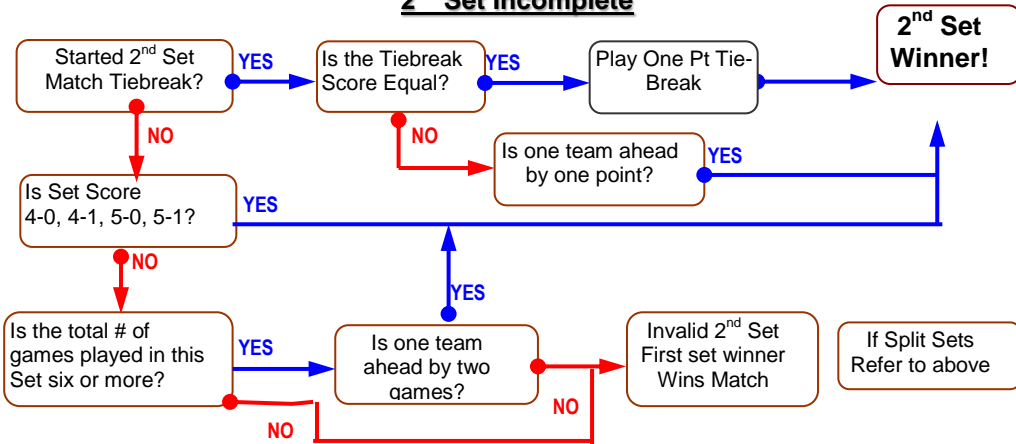
Example: Team A wins first set 7-6 and the second set is 1-2. Team A is the Winner, the 2nd set is invalid.



Split Sets



2nd Set Incomplete



GLOSSARY.

Heat Rule: Air Temperature of 95 degrees & higher.

Shared Facility: A facility that has been approved by the Section Office to be shared by two or more Local League Areas for local league play. The Host Area has priority with courts and time slots.

Unplayable Conditions: Conditions that make it impossible to continue playing, which may include, but is not limited to: Rain, Fire, Ash and if a State of Emergency prevents teams from getting to their locations in a timely manner. See an official National Weather Service. Local Areas may choose to use one particular site. See the Local League Regulations (LLR).

Wildcard Team: 2nd place team from District/Area Playoffs or local league, whichever applies.

Wildcard Procedure: A Rotation Order is in place. The Area next in line is asked to fill a wildcard spot in order to complete a draw at a championship. That Area gets placed at the end of the rotation order.

Exception: If there are only two Areas advancing to a championship and court availability allows for a third team to be added to the schedule, the 2nd place team from whichever of the two Areas is up next in the rotation will be asked to fill that spot without losing their place in the rotation order. If neither 2nd place teams can fill the spot, a Double Round Robin may be scheduled.

Exception: If the next Area in line for a wildcard ends up in the same flight as the LLW, that Area will be bypassed and the next Area will be asked to fill it.

SCTA Area League Coordinators (ALC)

ALC	AREA	EMAIL	WEBSITE	PHONE
Beth Kuney	BAKERSFIELD	kuney92@gmail.com		C: 661-331-9315
Gayle Hollenbaugh	BEACH CITIES	gaylehollenbaugh@sbcglobal.net		H: 310 514-9099
Donna Ringer	COACHELLA VALLEY	donna.ringer@gmail.com	www.coachellavalleyleagueetennis.com	F: 760-360-3572 H: 760-772-9884 C: 760-835-0740
Amy Ellison	INLAND EMPIRE	AREAugust@aol.com		H&F: 909 886-5060
Lori Andelson/ Michelle Kramer	LOS ANGELES	laleaguecoordinator@yahoo.com	www.laleaguecoordinator.com	C: 818-439-7749 C: 818-425-0376
Heidi Stryker (USTA Adult & Juniors)	ORANGE COUNTY	heidi.stryker3@gmail.com	www.orangecountyvusta.com	O: 714-357-0261 F: 714-838-1484
Lesley Waite	SAN DIEGO & SDNC	LesleyWaite@aol.com	www.sandiegotennis.com	H- 858-755-8110 F- 858-755-6147
Lisa Gillette-Glick	SAN FERNANDO VALLEY	lisaSFVtennis@gmail.com	www.justplayvusta.com	O: 818-231-1390
Jim Wong	SAN GABRIEL VALLEY	ubjtrader@yahoo.com	www.sgvvusta.org	C: 626-675-8856 F: 310-421-1408
Christine Lee Wong	SAN GABRIEL VALLEY	thecleegroup@gmail.com	www.sgvvusta.org	C: 909-910-3313 F: 310-421-1408
CathyAnn Simon	SANTA BARBARA	cas@sbtennispats.org	www.sbtennispats.com	C: 805 680-3870
Bob & Betty Isenberg	VENTURA COUNTY	bbisen@roadrunner.com		W/F: 805 480-0677

2017 USTA Southern California Section Adult League Sub-Committee

Lesley Waite – Chair
 Ali Ordonez – Staff liaison
 Angelia Chirichigno - Member
 Lisa Gillette-Glick – Member
 Tom Hall – Member
 Bob Isenberg – Member
 Vicky Parkerson – Member
 Scott Smith - Member

SCTA League Grievance Committees & Grievance Appeal Committees are formed as necessary first utilizing members of the Adult League Sub-Committee and then other committee members selected by the Adult League Sub-Committee Chairman and/or SCTA Staff